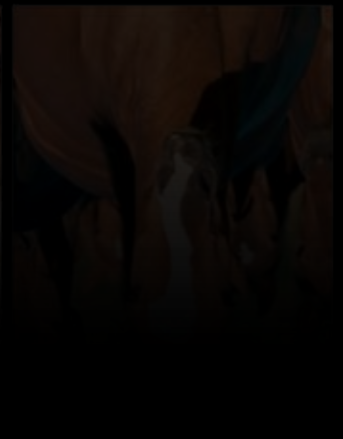
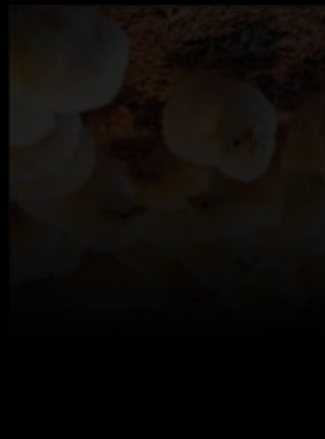
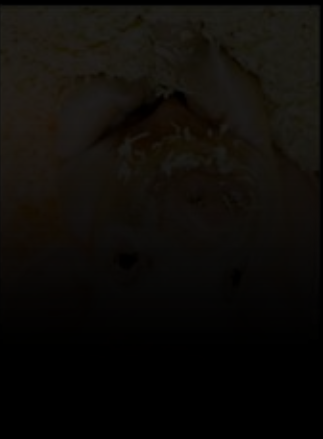
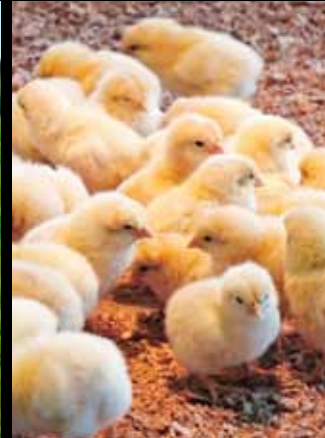


QUALITY BEDDING



SPANVALL[®]

WHAT IS SPANVALL

Spanvall is known all over the country for their products: quality bedding for all kinds of animals and for their wood pellets and briquettes. All products are made of side products from the wood industry in the form of shavings and sawdust.

The company was founded in 1969 by Kaj Østergaard, who was engaged in the poultry industry at that time, based on an idea of bedding for his own consumption. Later the idea escalated as the product became known all over the country and the demand increased. At the same time the wood producers experienced an increasing need to dispose of their side products from the production.

Later the concept has developed in order that now the bedding can be delivered as hard pressed bales as well as in loose weight and today the product has become a well-known bedding for almost all kinds of animals but primarily for pigs, cows, horses and chickens.

The logistic is performed by a specially build fleet of trucks. The sale and administration is undertaken by the main office in Tissø and in addition to this the company has stocks in Jütland as well as on Seeland. Today Spanvall has an extensive co-operation with producers of biofuel and bedding for animals in several European countries.

Spanvall is also selling related products such as peat, bark and chips with an increasing sale to garden centers and horticultural farms, among others.



BLUE SPANVALL



BLUE Spanvall can be used widely but is especially suitable for horses and poultry. Can also be used as deep bedding for cattle. Also suitable for mink.

DESCRIPTION OF THE PRODUCT

BLUE Spanvall is made of carefully selected white wood shavings of a good quality which have been heat treated. The shavings contain no toxins or foreign bodies. Virtually dust-free. The shavings have been dried down to 8-15 %. This provides a dry and warm bed with less bacteria than for instance when using straw as the shavings have a considerably higher absorption. A dry environment means less bacteria and fungus as they have difficulties existing in the dry environment. The shavings are pressed in plastic bales and wrapped with foil.



ADVANTAGES

- Highly absorbent
- Virtually dust-free
- Reduction of dunghill
- Soft, supportive and cushioning
- Economical in use

USE



- Clean the box.
- Horses: when starting up, 3-5 bales of shavings are spread evenly in the box (at a standard box of approx. 12 m²).
- To ensure a hygienic bed, droppings should be removed daily using a shavings fork.
- Using a shovel, remove wet patches and move the drier top layer to the banks of the bed.
- More shavings should be added when necessary to maintain a suitable depth of roughly 15 cm.
- Weekly maintenance will require 1 or 2 bales.
- Poultry as required.

TECHNICAL DATA

Product No.	Description	Kg/bale	Liter	Number each pallet	Structure	Material
1134	Blue Spanvall	24 kg +/- 10%	550	21 bales	Coarse	Pine and spruce

RED SPANVALL



RED Spanvall is especially used for pigs both in the stys as well as in loose housing systems as the shavings are approved for use in SPF herds (a health status of the herd).

DESCRIPTION OF THE PRODUCT

RED Spanvall is made of carefully selected white wood shavings of a good quality which have been heat treated. The shavings contain no toxins or foreign bodies. Virtually dust-free. The shavings have been dried down to 8-15 %. This provides a dry and warm bed with less bacteria than for instance when using straw as the shavings have a considerably higher absorption. A dry environment means less bacteria and fungus as they have difficulties existing in the dry environment. The shavings are pressed in plastic bales and wrapped with foil. Approved for use in SPF herds.



ADVANTAGES

- Less bacteria
- Reduction of deceases
- Binds ammonia and moisture
- Heat treated
- Economical in use
- Approved for use in SPF herds



USE

- Dosing for pigs is as required.
- The larger the quantity is, the more the pigs have to rummage in.

TECHNICAL DATA

Product No.	Description	Kg/bale	Liter	Number each pallet	Structure	Material
1137	Red Spanvall	25 kg +/- 10%	550	21 bales	Medium	Pine and spruce

ORANGE SPANVALL



ORANGE Spanvall is especially used for cattle and picklets.

DESCRIPTION OF THE PRODUCT

ORANGE Spanvall is made of pure sawdust carefully cleaned and heat treated. The quality is high and uniform. The sawdust contains no toxins or foreign bodies. Virtually dust-free. The sawdust has been dried down to 8-15%. This provides a dry and warm bed with less bacteria than for instance when using straw as the sawdust has a considerably higher absorption. A dry environment means less bacteria and fungus as they have difficulties existing in the dry environment. The sawdust is pressed in plastic bales and wrapped with foil.



ADVANTAGES

- Less bacteria
- Reduction of diseases
- Binds ammonia and moisture
- Heat treated
- Economical in use



USE

- **Cattle:** the bed stall is scrubbed twice a day.
- Approx. 500 gr. sawdust each stall is recommended each day.
- New sawdust should be added at least once a day.
- Walking areas are cleaned as required.
- **Pigs:** the dosing is individual but the larger the quantity is, the more the pigs have to rummage in.

TECHNICAL DATA

Product No.	Description	Kg/bale	Number each pallet	Structure	Material
1197	Orange Spanvall	22 kg +/- 10%	30 bales	Fine sawdust	Pine and spruce

SPANVALL SPECIAL MIX



Spanvall Special Mix is mainly used for cattle, horses and poultry.

DESCRIPTION OF THE PRODUCT

Spanvall Special Mix is a mixture of sawdust and peat. The size of the particles has a unique composition and the product has been sieved several times in order to obtain an optimum absorption ability. The combination between peat and sawdust has resulted in an extremely absorbent bedding, absorbing its weight many times in moisture (urine) and unsurpassed in its ability to absorb odors (ammonia).



ADVANTAGES

- Low price per kg. compared with for instance cut straw
- Highly absorbent
- Approved as ecological bedding
- Low PH value – less bacteria growth
- Extremely soft and comfortable
- Dust-free
- Reduction of dunghill
- Economical in use



USE

- Clean the box.
- **Horses:** When starting up, a mattress of approx. 15-20 cm is made.
- To ensure a hygienic bed, droppings should be removed daily using a shavings fork.
- Using a shovel, remove wet patches and move the drier top layer to the banks of the bed.
- More Special Mix should be added when necessary to maintain a suitable depth of roughly 15-20 cm – this is usually once a week.
- **Cattle:** Approx. 350-400 gr. per cow per day of Special Mix should be sufficient.
- Poultry as required.

TECHNICAL DATA

Product No.	Description	Kg/bale	Liter	Number each pallet	Structure	Material
3206	Peat and sawdust	850 kg +/- 10 %	6000	1	Medium 0-20 mm	Pine and spruce



Træpiller & Træbriketter

Den alternative energi i form af træpiller og træbriketter leveret fra Spanvall er 100% rent træ i højeste kvalitet.

Køb brændsel >



Strøelse & Spån

Spån og strøelse fra Spanvall er produkter af høj kvalitet og giver ethvert dyrehold et optimalt miljø at trives i.

Køb strøelse >



Altid gratis fragt
På alle webordrer hos Spanvall



Hurtig levering
Levering i hele Danmark



Mængderabat
Køb mere, spar mere

Spanvall er Danmarks største leverandør af spån og strøelse. Vi leverer bla. spån, tørv, træpiller, løse spån og savsmuld til hele landet.



Blå Spanvall
Grove Spån til heste og fjerkræ

DKK 1.825,00

Læg i kurv >

2



Orange Spanvall
Savsmuld til kvæg og svin

DKK 2.600,00

Læg i kurv >

2



Rød Spanvall
Mellefine spån til grise

DKK 1.953,00

Læg i kurv >

2

Hvilken strøelse skal du bruge til dine dyr?

Tryk på det ikon, der viser de dyr, som du skal bruge strøelse til. Så viser vi dig hvilke produkter, du skal bruge.



Instruktionsvideo

Se mere under [video](#). Her får du gode råd, vejledning og forskellige tips og tricks.

Spanvall er landskendt for sine kvalitetsspån og -strøelse til ethvert dyrehold samt for sine træpiller og træbriketter. Vi er Danmarks største leverandør af bla. spån, tørv, savsmuld, træpiller og briketter. Alle vores produkter er fremstillet af biprodukter fra træindustrien i form af spån og savsmuld.

VISIT US AT OUR WEBSITE
WWW.SPANVALL.DK